

Dunkirk and Lenton Area Committee Executive Summary

Unofficial December 2012 Data

Ward priorities – Progress update

Theme	Priority	Key Actions
SAFER	<ul style="list-style-type: none"> • Reduce burglaries in the ward • Tackle theft from motor vehicles • Tackle cycling on pavements 	<ul style="list-style-type: none"> • Operation Country & Neighbourhood Watch Schemes • Regular Cycle operations • Walking tour of cycle routes in Dunkirk & Lenton • NAG regularly run QMC Action • 2 Operation Metallica
NEIGHBOURHOODS	<ul style="list-style-type: none"> • Tackle waste management and fly tipping • Resolve and improve tree issues on Lenton Drives • Sustain a balanced community 	<ul style="list-style-type: none"> • Gullies cleansing commenced 17th Dec 2012 • Regular deep clean of the ward, recently Jan 2013 • Forum have got spot reporting and regular canal clean ups • Tree work phase 1 complete, 2nd phase planting will be completed in Feb • Area 4 Xmas event, tree planting ceremony with Edna'G'old school, • Dunkirk coffee morning, WOA and Leader Listens event Feb 2013 • Dunkirk primary school, Abbey site opened in Jan 2013 on Lenton Blvd • NAG involved in all aspects of Neighbourhoods and it's issues.
FAMILIES	<ul style="list-style-type: none"> • Improve play and youth facilities 	<ul style="list-style-type: none"> • New Community & Family team operating in the ward. • Regular play sessions at Penn Ave and Dunkirk Children Centre • Activ8uth provide play and youth activities, involved in Community garden & Lenton Recreation • Monty Hind, free activities for young people
HEALTH	<ul style="list-style-type: none"> • No fresh fruit or vegetable shop in Dunkirk • Improving mental health and wellbeing 	<ul style="list-style-type: none"> • 33 Questionnaire s completed, analysis completed by Health Promotion d • Eco- works may provide fresh fruit & veg van on weekly basis, sampling taking place in Feb at Dunkirk Community Centre • Mental health awareness campaign info at the flats, church and other community places in the ward. • Drop in sessions at Tommy's Church, welfare rights awareness event • Free health screening at events and community venues
WORKING	<ul style="list-style-type: none"> • Apprenticeships and training for all including volunteering opportunities • Local opportunities for local work including Nottingham University and Boots 	<ul style="list-style-type: none"> • Health Promotion recruiting Change Maker Volunteers • Volunteering offered via Forum & University • Nottingham University 'Apprenticeship programme' • Launch of Lenton Work Club

Community Engagement

Events Delivered

Event	Lead Partners	Date/Time	Venue
Tree planting ceremony	Neighbourhood & Tree Services	19 th Nov 2013, 1pm to 3pm	Lenton Drives
Budget Consultation Event	Neighbourhood Services	26 th Nov, 6pm to 7.30pm	Thomas Helwy's Baptist Church
X-mas Event	Neighbourhood Services	22 nd Nov, 4pm to 6pm	Canning Circus
Week Of Action	Neighbourhood Services & Partners	4 th Feb to 8 th Feb	Dunkirk & Lenton ward

Event	Lead Partners	Date/Time	Venue
Leader Listens event	Neighbourhood Services	26 th Feb 2013, 5pm to 7pm	Dunkirk Community Centre
Dragon's Den Event	Neighbourhood Services	5.30pm to 8pm March 3013	The Lenton Centre
Health Day	Dunkirk & Lenton Partnership Forum	May 2013	TBC

Community Engagement

Ward Walks

Area/Estate	Date/Time	Meeting Point
Penn Ave	30 th Jan 2012, 1pm to 3pm	Penn Ave Car Park
WOA ward walk	4 th Feb 2013, 10am to 12pm	Lenton Blvd
Lenton Drives and Lenton Flats	27 th Feb 2013, 1pm to 3pm	Forum Office in Church Square

Community Meetings

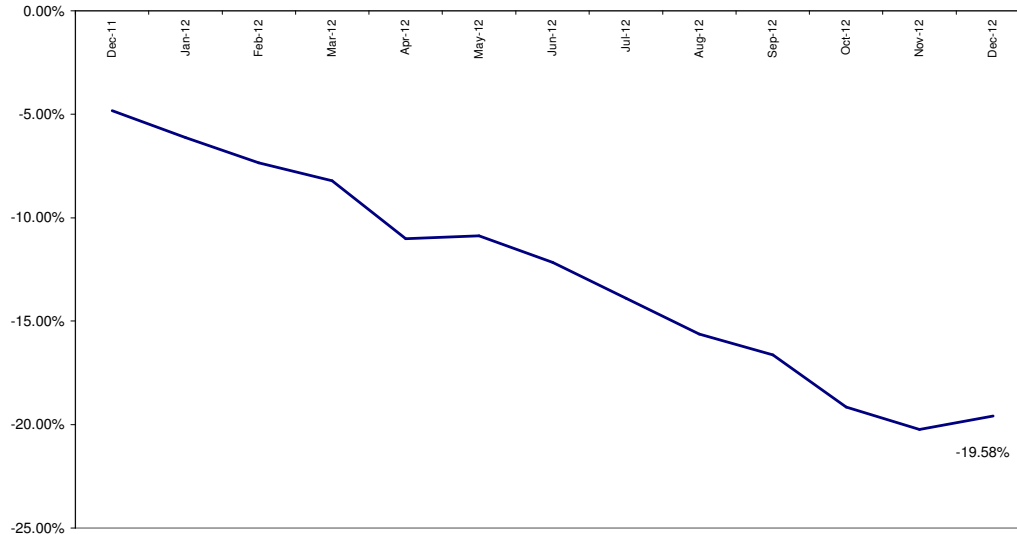
Group	Date	Venue
Dunkirk Community meeting	6 th Feb 2013, 6pm	Dunkirk Community Centre
Lenton Community meeting	11 th March 2013, 6pm	Thomas Helwy's Baptist Church
NAG meeting	23 rd Jan 2013, 6.30pm	St Mary's Church
NAG meeting	20 th Feb 2013, 6.30pm	Rose and Crown Pub, Derby Rd
NAG meeting	27 th March 2013, 6.30pm	Rose and Crown Pub, Derby Rd

Finance

- **Ward Councillor Budgets**
Total amount allocated this period **£300.**
Budget remaining unallocated **£23,980** (inc. of 2012-2013 allocation)
- **Area Capital Fund**
Total amount allocated this period **£125,868.**
Budget remaining unallocated **£NIL** (inc. of 2012-2013 allocation)
- **NCH Environmentals- £30,000**
- **Others – Section 106,**
None this period

Crime

All Crime in Dunkirk & Lenton -
% Change over 2010/11 Baseline (Rolling 12 Month)



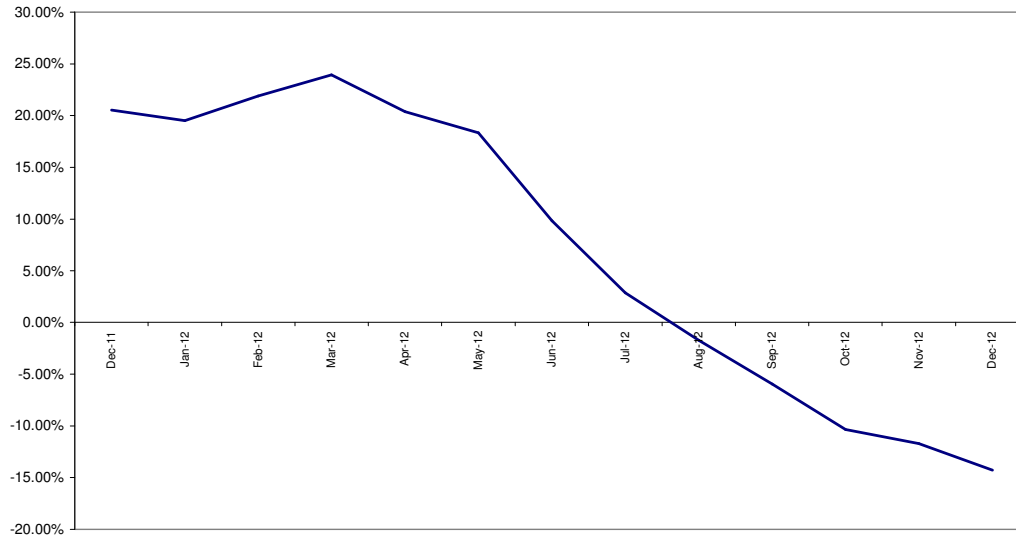
Red*	62 more crimes	66.67%
Amber		
Green		

*Refers to December 2012 compared to December 2011

- In December 2012 (compared to December 2011) All Crime in Dunkirk and Lenton was up 66.67% (62 crimes, see above right RAG rating). Note that crime in December 2011 was uncharacteristically low, which will account for at least some of this increase.
- The above graph compares volume of All Crime over the previous 12 months to a 2010/11 baseline. The graph highlights the steadily improving performance of Dunkirk and Lenton.
- Year to date (compared to the corresponding period last year) All Crime in Dunkirk and Lenton was down 16.44%.

All ASB

All ASB in Dunkirk and Lenton -
% Change over 2010/11 Baseline (Rolling 12 Months)



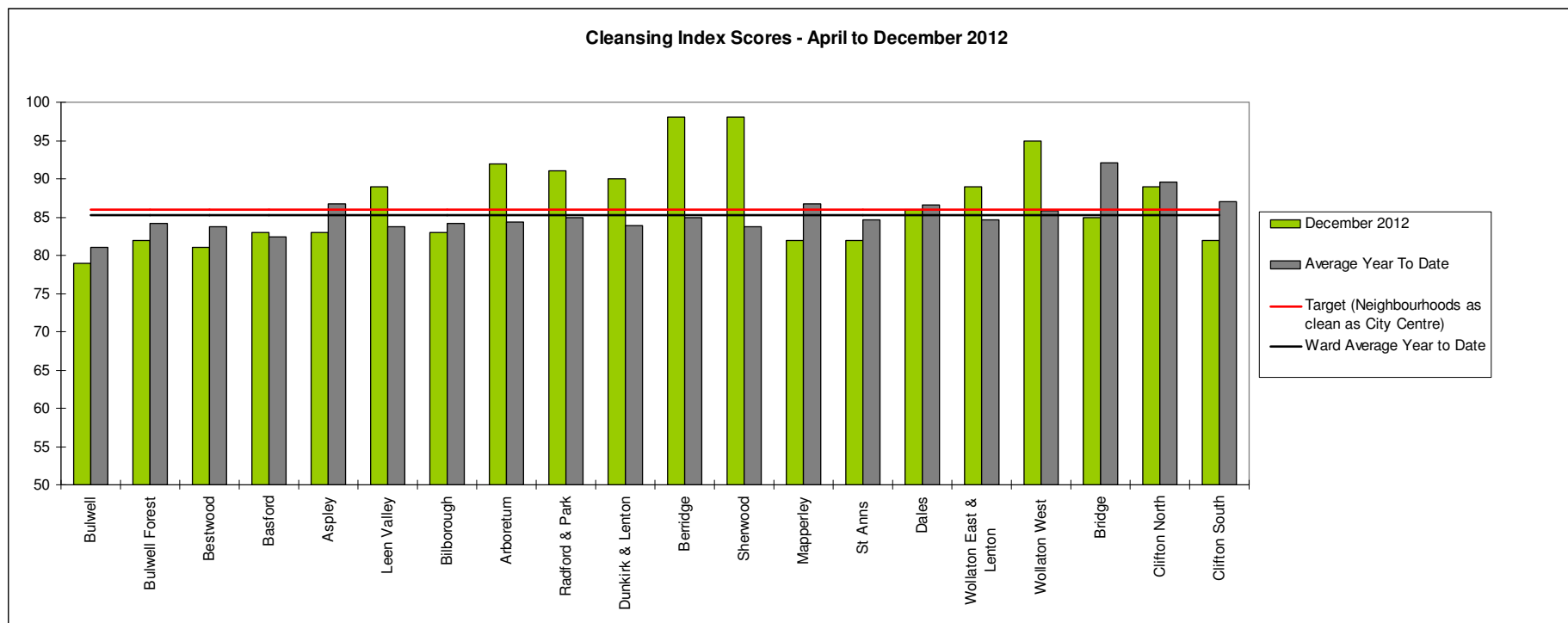
Red		
Amber		
Green*	15 fewer calls	-39.47%

*Refers to December 2012 compared to December 2011

- In December 2012 (compared to December 2011) All ASB in Dunkirk and Lenton was down by 39.47% (15 calls, see above right RAG rating).
- The above graph compares volume of All ASB over the previous 12 months to a 2010/11 baseline. The graph emphasises the steadily improving performance of Dunkirk and Lenton since a relatively small spike back in March 2012.
- Year to date (compared to the corresponding period last year) All ASB in the ward is down by 39.34%.

Cleanliness Index

This graph shows the position of your ward compared to other Wards



The “neighbourhood as clean as the city centre” benchmark target on cleanliness is to achieve a score of 86% in every ward. The 86% target is shown in red in the above graph.

To calculate the Cleanliness Index (CI) an agreed number of transects are surveyed across an area covering a range of land types. Each site surveyed is awarded a cleanliness grade based on a 7 point scale from A to D where Grade A: – no litter, and Grade D: - heavily littered. The maximum possible score of 100 is achieved when all sites achieve Grade A.

The Code of Practice for Litter and Refuse (COPLAR) requires councils to strive to reach an ‘acceptable’ standard of cleanliness (grade B or better) across the Council area. Grade A is the ultimate goal and is how a site should be immediately after sweeping but is almost impossible to maintain for any length of time. For example, a grade A site is completely free of litter – one cigarette butt takes it down to B+.

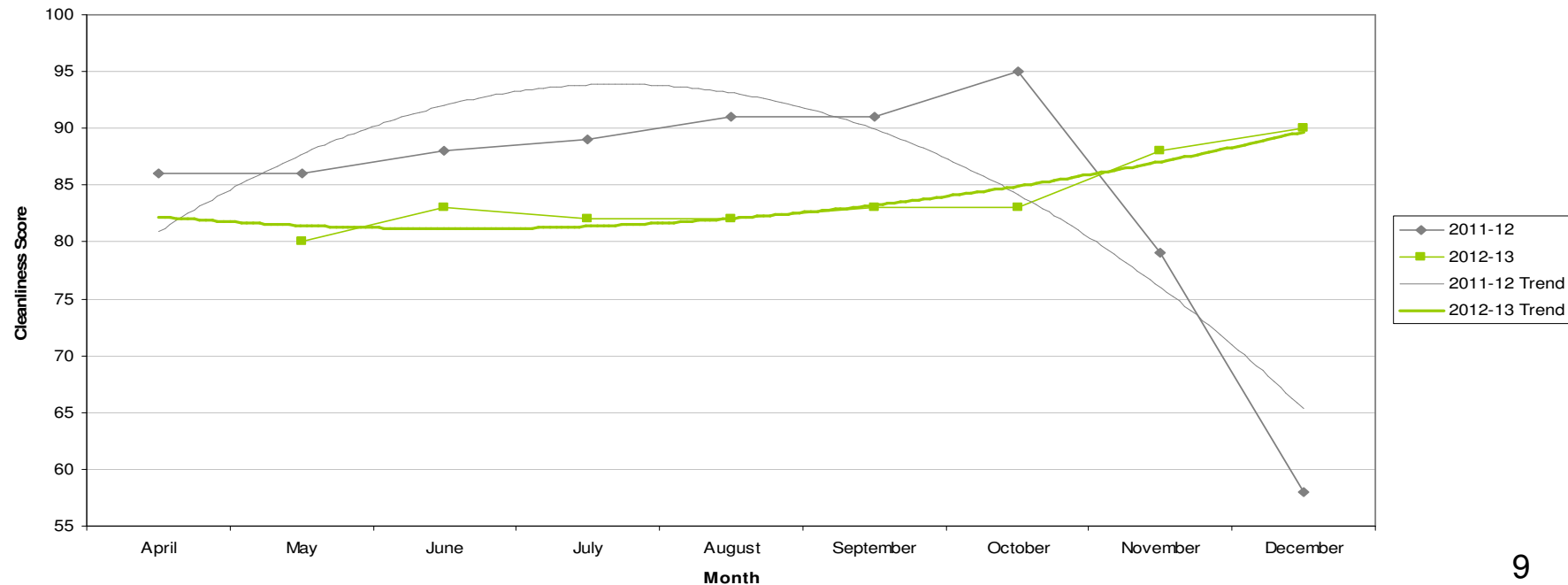
To achieve the manifesto commitment of Neighbourhoods as clean as the City Centre a target of 86 is required as that was the CI for the City Centre in May 2011. To give some context if all areas surveyed achieved a grade ‘B’ standard, this would equate to a cleanliness index of 67.

Cleanliness Index

Cleanliness Index Score	90
Performance compared to previous year	↗
Performance compared to neighbourhoods target of 86	↗

- All data refers to a comparison with the previous year's month
- It is proposed that performance over time graphs be used for each indicator
- Historic data for comparison is not available for dog fouling

Cleanliness Index

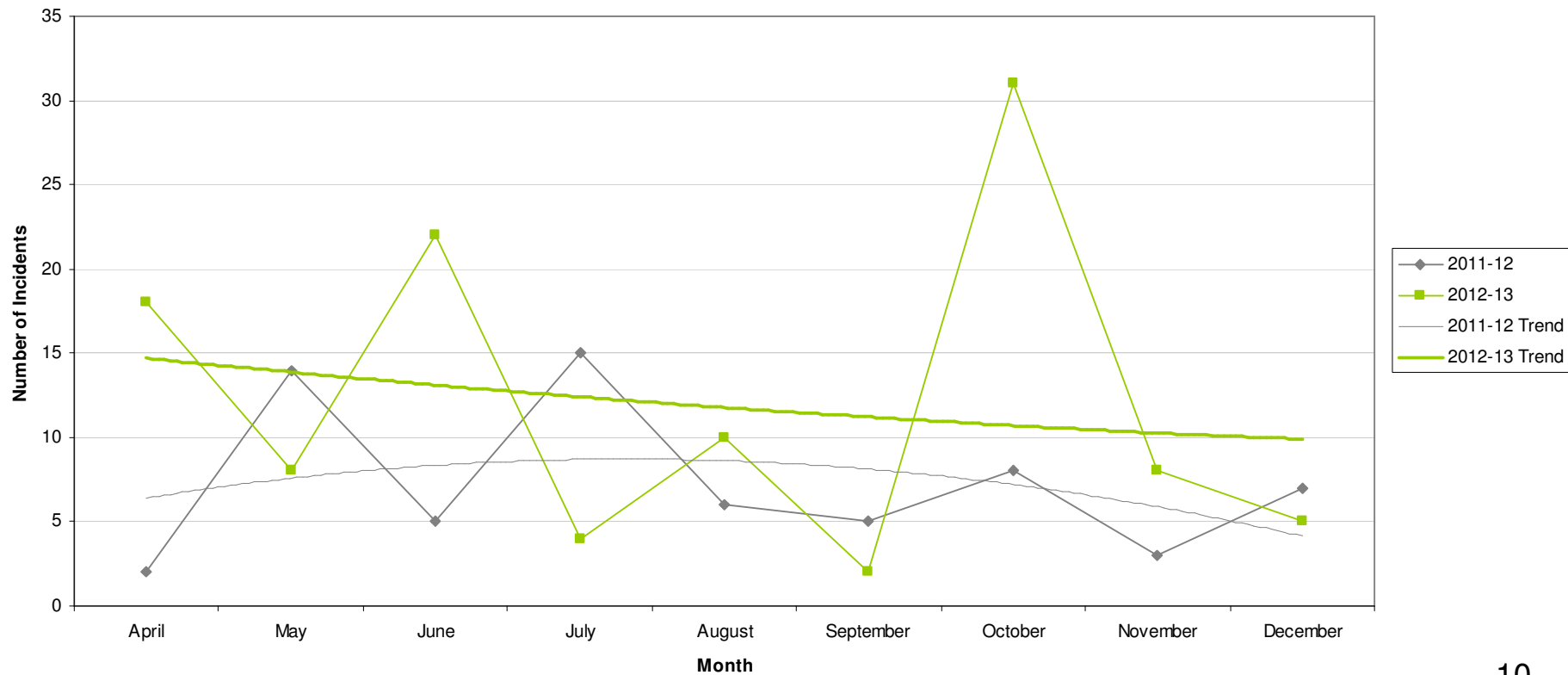


Graffiti Reports

RED		
AMBER		
GREEN	5 incidents	Decrease of 2

- All data refers to a comparison with the previous year's month
- It is proposed that performance over time graphs be used for each indicator
- Historic data for comparison is not available for dog fouling

Incidents of Graffiti

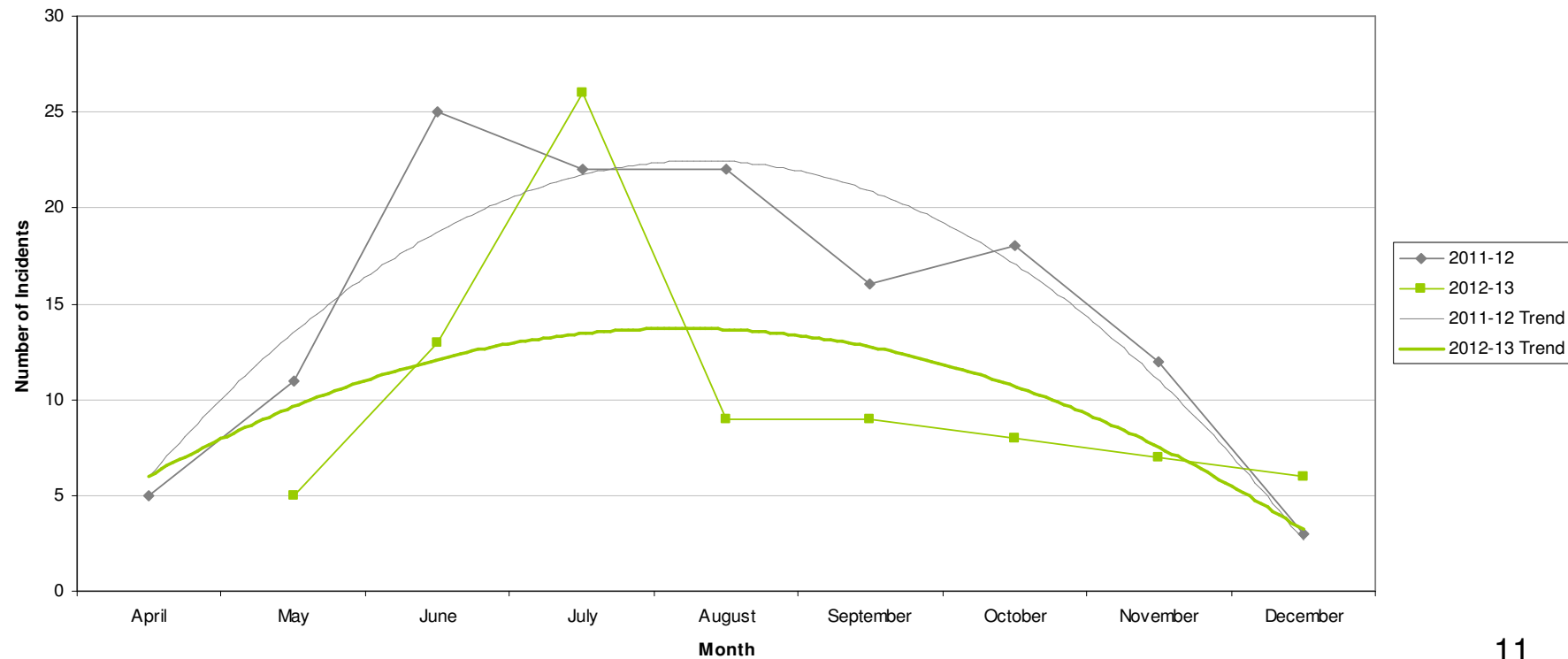


Fly Tipping

RED	6 incidents	Increase of 3
AMBER		
GREEN		

- All data refers to a comparison with the previous year's month
- It is proposed that performance over time graphs be used for each indicator
- Historic data for comparison is not available for dog fouling

Incidents of Fly Tipping



Unemployment Rate

Area	Nov-12			Change in last		Change in last year	
	Number	Rate	City Rank	Number	%	Number	%
Berridge	1,030	7.1	7	-11	-1.1	67	7
Dunkirk and Lenton	253	2.3	19	-7	-2.7	-20	-7.3
Radford and Park	754	4	17	-14	-1.8	-13	-1.7
Sherwood	544	5.1	13	2	0.4	-66	-10.8
Wollaton East and Lenton Abbey	143	1.4	20	4	2.9	5	3.6
Wollaton West	248	2.7	18	-6	-2.4	10	4.2
Aspley	1,174	10.4	1	34	3	-13	-1.1
Basford	728	6.5	10	21	3	36	5.2
Bestwood	1,009	8.9	3	22	2.2	19	1.9
Bilborough	750	7.2	6	5	0.7	-25	-3.2
Bulwell	1,061	9.7	2	44	4.3	34	3.3
Bulwell Forest	410	4.5	15	-19	-4.4	-45	-9.9
Leen Valley	335	4.8	14	-18	-5.1	-11	-3.2
Bridge	696	6.6	9	-11	-1.6	-24	-3.3
Clifton North	378	4.3	16	-9	-2.3	-23	-5.7
Clifton South	524	6	12	17	3.4	11	2.1
Dales	863	7.4	5	-1	-0.1	22	2.6
Mapperley	703	6.3	11	1	0.1	-3	-0.4
St Ann's	1,195	8.7	4	-39	-3.2	8	0.7

This is an edited version of a report produced by: Geoff Oxendale, Information and Research Officer, Nottingham City Council

Housing

Dunkirk Ward - Housing



Anti-social behaviour - Hyson Green (Dunkirk and Lenton Ward)

Indicator	Current Target	2010/11	2011/12	2012/13		
		Value	Value	Value	Status	Trend
% of ASB cases resolved - Hyson Green	97.6%	100%	97.53%	100%		
% of ASB cases resolved by first intervention - Hyson Green	75%	-	-	77.05%		n/a

Empty properties - Dunkirk and Lenton Ward

Indicator	Current Target	2010/11	2011/12	2012/13		
		Value	Value	Value	Status	Trend
Lettable voids Dunkirk & Lenton Ward	-	19	1	0		
Average void re-let time for Dunkirk & Lenton Ward	26	38.98	18.72	26.64		
Empty properties awaiting decommission in Dunkirk & Lenton Ward	-	2	39	95		

Estate star ratings (from Tenant Service Inspectors)

Indicator	2010/11		2011/12		2012/13		
	Value	Status	Value	Status	Value	Status	Trend
Estate star rating - Lenton	2 Star		3 Star		3 Star		

Data prepared by Nottingham City Homes Performance Team

For more information please contact Tricia Quinn, Performance Review Manager on 0115 9157365 or Marcus Parton, Performance Review Officer 0115 915715

Housing

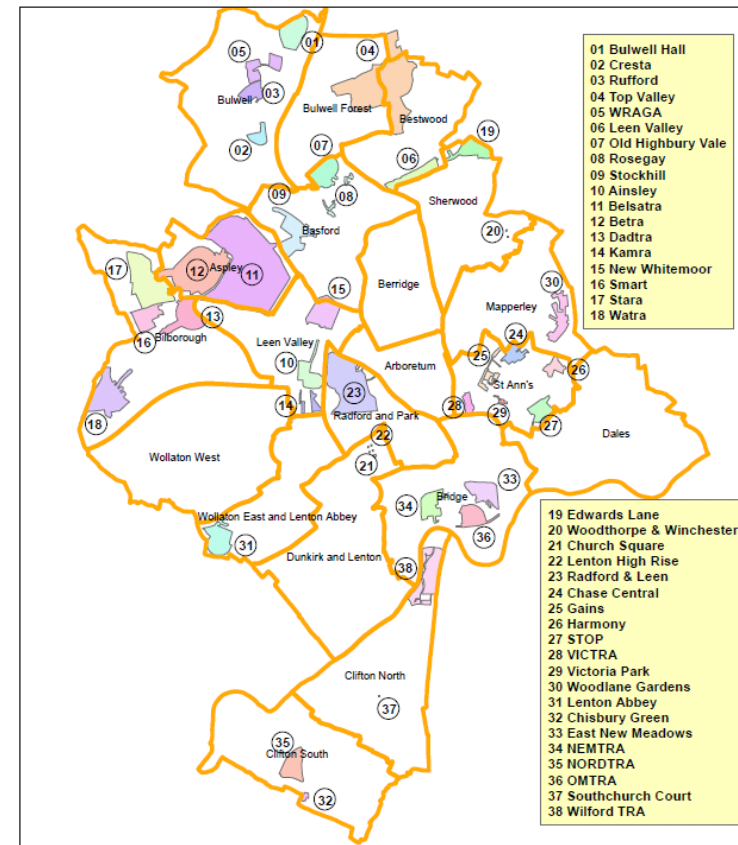
Rent Collection - Hyson Green

Indicator	Current Target	2010/11	2011/12	2012/13		
		Value	Value	Value	Status	Trend
Rent charged that has been collected - Hyson green office area	100.2%	100.7%	101.2%	100.5%		

Key:

- Performance on or exceeding target
- Performance below target
- Data only performance indicator
- Performance has improved compared to two years ago
- Performance has deteriorated compared to two years ago
- Performance unchanged

Map of Tenants and Residents Associations by Ward



Data prepared by Nottingham City Homes Performance Team

For more information please contact Tricia Quinn, Performance Review Manager on 0115 9157365 or Marcus Parton, Performance Review Officer 0115 915715

Community Protection

In December 2012 there were no court outcomes in Dunkirk and Lenton.

Data has been received from Community Protection and where postcodes have been listed these have been geo-coded and mapped to determine the Ward. All addresses relate to the address of the Perpetrator.

FPNs are not currently available at ward level.

Fire

Table: Fire Rate (per 1000 of population) by ward (previous 12 months)

Ward	All Fire		Property		Secondary		Rank
	Volume	Rate	Volume	Rate	Volume	Rate	
Arboretum	14	1.21	5	0.43	9	0.77	13
Aspley	68	3.90	13	0.75	55	3.16	2
Basford	62	3.84	12	0.74	50	3.10	3
Berridge	44	2.23	19	0.96	25	1.27	10
Bestwood	44	2.58	13	0.76	31	1.82	7
Bilborough	46	2.75	13	0.78	33	1.97	6
Bridge	37	3.63	6	0.59	31	3.04	4
Bulwell	91	5.51	25	1.51	66	4.00	1
Bulwell Forest	43	3.13	12	0.87	31	2.26	5
Clifton North	15	1.15	4	0.31	11	0.84	16
Clifton South	19	1.36	6	0.43	13	0.93	12
Dales	19	1.18	10	0.62	9	0.56	15
Dunkirk and Lenton	11	0.91	5	0.41	6	0.50	18
Leen Valley	25	2.30	3	0.28	22	2.02	9
Mapperley	16	1.06	8	0.53	8	0.53	17
Radford and Park	30	1.48	11	0.54	19	0.94	11
Sherwood	18	1.19	3	0.20	15	1.00	14
St. Ann's	31	2.40	9	0.70	22	1.70	8
Wollaton East and Lenton Abbey	8	0.69	1	0.09	7	0.61	19
Wollaton West	5	0.34	0	0.00	5	0.34	20
Average Rate (of 20 Wards)	2.14		0.57		1.57		

Key:

- Highest
- Second Highest
- Third Highest

Dunkirk and Lenton ranks 18th highest out of the 20 wards for rate (per 1000 of population) of all intentional fire.

NB: Wards are ranked from 1 – 20 where 1 is the highest Rate and 20 is the lowest Rate.

Methodology

Data has not been audited or verified and therefore must only be used as a reflection of crime.

Where Crime and ASB is broken down to Ward level this data has been mapped, and using a polygon created for the *Council boundary* of the 'City Centre' this data has been removed where it has impacted on the Wards that crossed into it. Where figures for Rate of the population have been referred to, this has been taken into account for these calculations.

Where possible the most recent data is used, although for some areas this may be a month further in arrears.

Discussions continue with other agencies regarding what further data can be included.